



A Great Place to Grow

11800 Town Center Drive NE

St. Michael, MN 55376

763-497-2041

www.stmichaelmn.gov

QUARTERLY NEWSLETTER
SPRING 2023

What's Inside

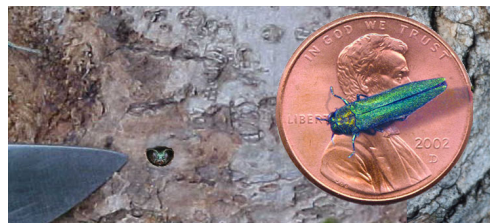
INSERT: EMERALD ASH BORER INFORMATION

- 2 EVENTS
- 3 SPRING NEWS
- TOWN CENTER PARK & RENTAL RESERVATIONS
- 4 ROAD PROJECTS
- SPRING LAWN CARE
- CONTACT INFORMATION

CITY NEWS

EMERALD ASH BORER HAS ARRIVED HERE'S WHAT YOU NEED TO KNOW

Emerald Ash Borer (EAB) has been found in the City of St. Michael. EAB is an invasive insect that kills ash trees by tunneling under the bark and feeding on the tree. Ash trees can be treated with an insecticide to prevent emerald borer infestation, but must be repeated every two to three years. If you do not wish to treat your trees, consider having them removed now. If your ash trees become heavily infested or dead, it will be more expensive to cut down and remove later because the trees become dangerous to cut down.



Although residents can contact any tree company, the City has secured an agreement with Rainbow Treecare at a negotiated price for residents that wish to treat their ash

trees. Treatment cost depends on tree size but is typically between \$75-\$200 per tree.

Learn more about Emerald Ash Borer, how to identify ash trees, and find Rainbow Treecare information at:

<https://stmichaelmn.gov/eab> and see included insert.



ST. MICHAEL PARKS PLAN SURVEY

The City of St. Michael is developing plans for our park system and we want to hear from you!

- How do you use the parks and trails today?
- What would you like to see in the future?

Provide feedback on the City's system as a whole and your specific parks.

SCAN
-OR-
WEB →



hkqi.mysocialpinpoint.com/st-michael-park-system-plan

Events

Family Youth Community Connections (FYCC) Events

Bike Rodeo

May 6: 11 a.m.-1 p.m., City of St. Michael

Family Nights in the Park

Wednesdays, June 7-Aug. 30: 6 p.m., St. Michael Town Center Park

Reading in the Park

Tuesdays, June 13-Aug. 1: 9 a.m.-10 a.m., St. Michael Town Center Park

Mother/Son Ninja

June 23: 6 p.m.-8 p.m., Rec Center

Penny Carnival

July 14: 10 a.m.-noon., Albertville Central Park (rain location Albertville City Hall)

Touch A Truck

July 18: 9:30 a.m. storytime, 10 a.m.-11 a.m. touch a truck, St. Michael Town Center Park

Open Streets

September 9: 11 a.m.-1 p.m., FYCC, Albertville

For more FYCC events, visit www.myfycc.com.



16TH ANNUAL ST. MICHAEL DAZE & KNIGHTS FESTIVAL

AUGUST 11 & 12, 2023



Visit the Daze & Knights website at stmdazeandknightsfestival.com for more information.



St. Michael will be hosting the BMX Land O Lakes Nationals Aug. 18-20, 2023. This will be the first time the event has been in St. Michael since 2002. Crow River BMX has worked hard to welcome it back to St. Michael. Be sure to follow Crow River BMX for event details as it comes closer: www.usabmx.com/tracks/1405.

Great River Regional Library Events

ECFE Storytime

April 13, 20, 27: 10:30 a.m.- 11 a.m., St. Michael Library

Family Storytime

April 17 & 24: 10:30 a.m.- 11:15 a.m., St. Michael Library

Library STEM Fun with Origami

April 17: 4 p.m.-5 p.m., St. Michael Library

Genealogy for Everyone

April 19: 6 p.m.-7 p.m., St. Michael Library

For a full list of Great River Regional Library events, visit:



TECHNOLOGY GIVEAWAY

Thanks to a grant from the State of Minnesota Department of Human Services, you may be able to get a FREE device.



- ELIGIBILITY GUIDELINES**
- ✓ Age 60 or older
 - ✓ An individual monthly income at or below \$2,500 or a couple/household monthly income at or below \$3,300
 - ! Priority is given to those with a demonstrated need for a device (telemedicine, benefits enrollment, etc.)

REGISTER

CROW RIVER
SENIOR CENTER
11800 Town Center DR #200
St Michael, MN 55376
763-497-8900

Application Day
Monday, June 12
1:30 pm to 3 pm

Come to the center to complete an application.



Pick Up Day
Monday, June 26
1:30 pm to 3 pm

Come to the center to pick up your device including an initial setup and customization.

We can also help you learn if you're eligible for the **Affordable Connectivity Program**.

Decision guide for managing ash trees



Start here: inventory your ash trees

- How many ash trees do you have?
- Where are they located?



Determine if your ash trees are worth saving

- Are they healthy?
- Are they at least 30 inches in circumference (10 inches in diameter) at chest height?
- Do they show no or few signs of emerald ash borer infestation?
- Are they in a good location?
- Are they valuable to you?

Decide: Are you interested in saving your ash trees?

Yes

No



Monitor and make a plan

- Ash trees will eventually become infested and need to be removed
- Monitor for signs of emerald ash borer and make a plan for removing your trees.
- Consider planting a tree or two to replace any you remove. Plant the right tree for the location, and plant a variety of trees.

No

I don't know

Yes

Work with a certified arborist to treat your trees

- Treat ash trees that are within five miles of an emerald ash borer infestation
- Hire a certified arborist to do a trunk injection of emamectin benzoate (commercial name Tree-age)
- Treat trees every two to three years in late spring
- Cost is typically \$100 to \$200 per tree, depending on the tree's size



Hire a tree care professional

- Hire an ISA-certified arborist. Arborists can help you assess, treat, remove, and replant trees. Find arborists near you at treesaregood.org.
- Get at least two estimates.
- Ask for references and insurance.
- Tip: Work with your neighbors to seek discounts for managing your trees all at once.

Identifying ash trees

Look for the following characteristics to determine if your tree is an ash tree:



Branches grow directly opposite from one another.



Compound leaves, or multiple leaves on one stalk.



Bark with diamond-shaped pattern.



Seeds that are oar-shaped and typically hang in clusters.

Measuring your trees

Measure the distance around the trunk at about 4.5 feet off the ground, or about chest height. This gives you the circumference. To get diameter, divide the circumference by 3.



Signs of emerald ash borer infestation

The following signs may indicate that an ash tree is infested with emerald ash borer.



Leaves on the top or on one part of the tree start dying.



Sprouts growing from the roots or base of the tree indicating that it is stressed.



Increased woodpecker activity with sections of the bark stripped away.



Adult beetles leaving the tree create D-shaped exit holes.



Larvae feeding on the tree's tissue leave a serpentine pattern underneath the bark.

Information courtesy of
Hennepin County
Environment and Energy

trees@hennepin.us
hennepin.us/ashtrees

SPRING NEWS

Burning Permits

All permits in St. Michael need to be obtained through the Minnesota Department of Natural Resources at www.dnr.state.mn.us/forestry/fire/questions/html. Here you can also find burning restriction information.

Compost Brush Site Card

Residents of St. Michael have 24 hour access to the compost/brush drop site located at 3150 Lander Avenue NE. If you need an access card, stop by City Hall.

Night to Unite (previously National Night Out)

On August 1, members of the St. Michael City Council, St. Michael Fire Department and Wright County Sheriff's Office will be available to visit Night to Unite parties. Contact Liz at lizz@stmichaelmn.gov or **763-416-7928** if you are coordinating a Night to Unite party or if you are interested in receiving a planning packet.

Property Values and Board of Appeal Meeting

The valuations of St. Michael homes are out for the 2023 assessment year. It is important to note that an increasing value does not necessarily mean an increase in taxes, which are based on the tax levy spread among all properties. The average valuation increase in the City of St. Michael was lower than the countywide average for residential properties resulting in the average taxpayer being responsible for less of the County Tax levy in 2024 than they are for 2023.

The Board of Review is set for Tuesday April 25 at 6 p.m. This is a time to appeal the **value** on your property. If you would like to talk to someone about your property value or potentially appeal, contact City Assessor John Denney as soon as possible at johnd@stmichaelmn.gov or **763-416-7913**.

Sprinkling Restrictions

To ensure adequate water supply for fire protection in the summer months, water use for the purposes of sprinkling is restricted to between the hours of 7:00 p.m. to 10:00 a.m. from June 1 through September 30. Residents with even house numbers water on even days, and those with odd house numbers water on odd days. New sod and seed is exempt for 60 days. You must notify the Water Department at **763-497-3611** prior to installation.

The annual public storm water meeting will be held on June 13 at 7 p.m. in the Council Chambers.

Crow River BMX

Community Open ride nights take place every Thursday during June through Labor Day from 6:00 p.m.-7:30 p.m., weather permitting. No membership is needed and this is a free community event. Rental Bikes are available and loaner helmets (free) are on site. Long pants and closed toed shoes required. The track is located in the Lower Rec Center. For more information and to receive updates, like them on Facebook and follow them on Instagram.

Help Prevent Crime

The Wright County Sheriff's Office reminds residents to lock vehicles at all times. The majority of thefts are preventable if vehicles are locked and valuables are not visible. Overhead garage doors should also be closed and entry and garage service doors locked. Call 9-1-1 immediately if you see suspicious activity in your neighborhood.



Splash Pad

Opening June 2 (weather dependent)

10 a.m. to 8 p.m.

7 days a week

Concessions Available

Pickleball Courts

First come, first serve

(equipment rentals available at St. Michael Library)

Shelter Reservations:

Now Booking reservations for May 1st & later at the St. Michael Lions Pavilion, splash pad and playground shelters

Need a space for an upcoming event? The City of St. Michael offers numerous spaces residents can rent, indoors and outdoors!

Visit the website for all reservations at:

www.stmichaelmn.gov/rentals

SUMMER STREET PROJECTS

The City of St. Michael is planning to complete a roadway improvement project on a portion of Maclver Avenue NE. The proposed project will reconstruct and widen Maclver Avenue NE from 43rd Street NE/Larabee Avenue NE to north of Frankfort Pkwy NE. Vehicle safety improvements include adding a roundabout at the Frankfort Pkwy NE and Maclver Avenue NE intersection to address frequent complaints and crash history. A new multi-use trail is also planned along the west side of Maclver Avenue NE to fill a gap in the trail system and provide better pedestrian access to and from Town Center. Construction of this project is anticipated to begin this summer and will be completed before winter.

The City is also completing street maintenance to improve and extend the life of streets in several areas, as well as completing full construction on others that have met and exceeded their design life to the point where a full reconstruction is necessary. For more information on these areas and to stay up to date on all street projects, visit our website at: www.stmichaelmn.gov/streetprojects.



4 Eco-Friendly Tips for Spring Lawn Care

- 1) Leave your grass clippings on your lawn to act as a free and natural fertilizer.
- 2) A slow release nitrogen fertilizer will decrease how often you need to apply.
- 3) Install a rain barrel to catch water for watering plants and decrease your monthly water bill.
- 4) Mow at least 3 inches high to promote a drought and weed resistant lawn.

CONTACT US

Phone: 763-497-2041

Email: cityhall@stmichaelmn.gov

Website: www.stmichaelmn.gov

Non-Emergency: 763-682-1162

Emergency: 911

HOURS

Monday-Thursday: 8 a.m. – 5 p.m.

Friday: 8 a.m. – 2 p.m.

MAYOR

Keith Wettschreck

COUNCIL MEMBERS

Ryan Gleason, Joe Hagerty,
Tom Hamilton, Scott Pedersen



11800 Town Center Drive NE
St. Michael, MN 55376

Presorted Standard
U.S. Postage Paid
Saint Michael, MN
Permit No. 13

****ECRSS** R

To: Postal Customer